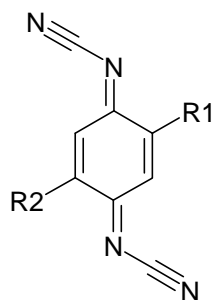
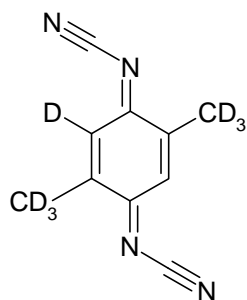


DCNQI

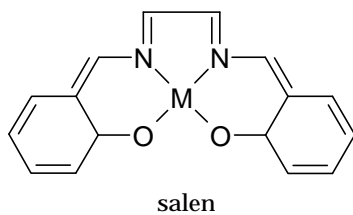
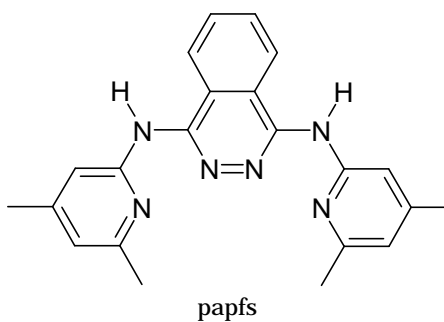
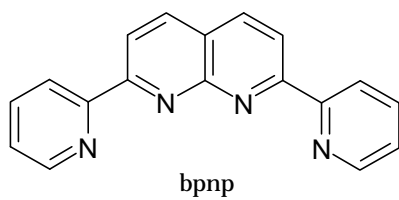
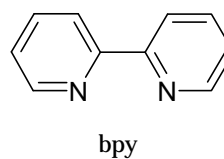
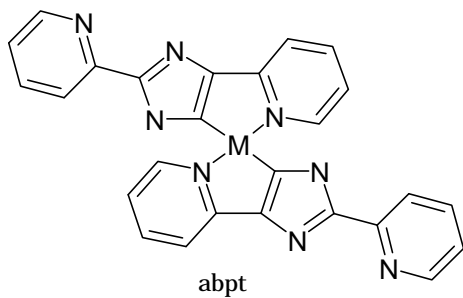
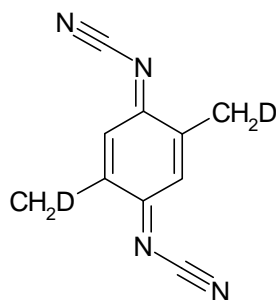


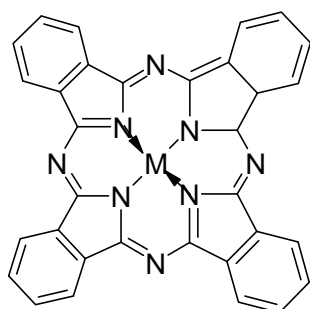
	R1	R2
BrMe-DCNQI	Br	Me
ClMe-DCNQI	Cl	Me
DBr-DCNQI	Br	Br
DI-DCNQI	I	I
DMe-DCNQI	Me	Me

(DMe-DCNQI[3,3;1]d7)2Cu

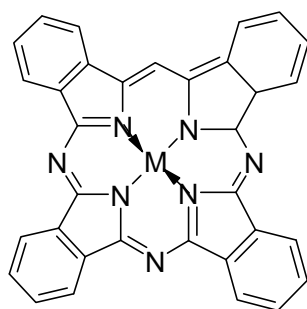


(DMe-DCNQI-a,a'-d2)2Cu

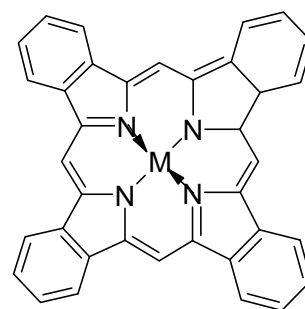




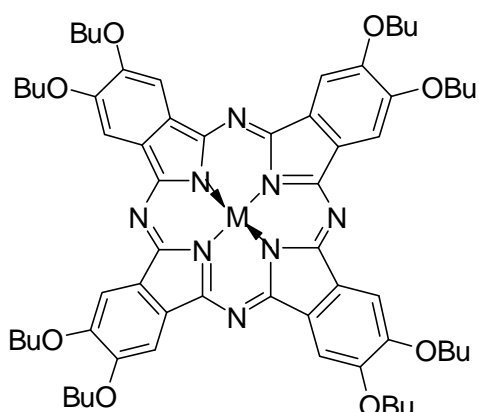
phthalocyanine



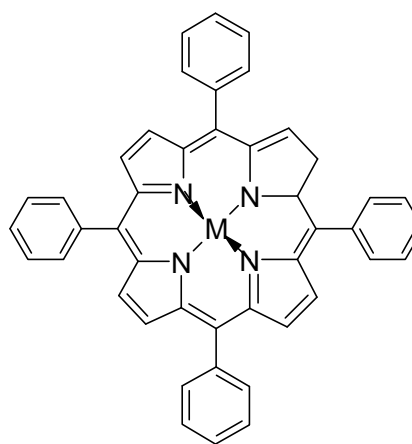
triazatetrabenzoporhiline



tetrabenzoporhiline



octabutoxyphthalocyanine



tetraphenilporhiline

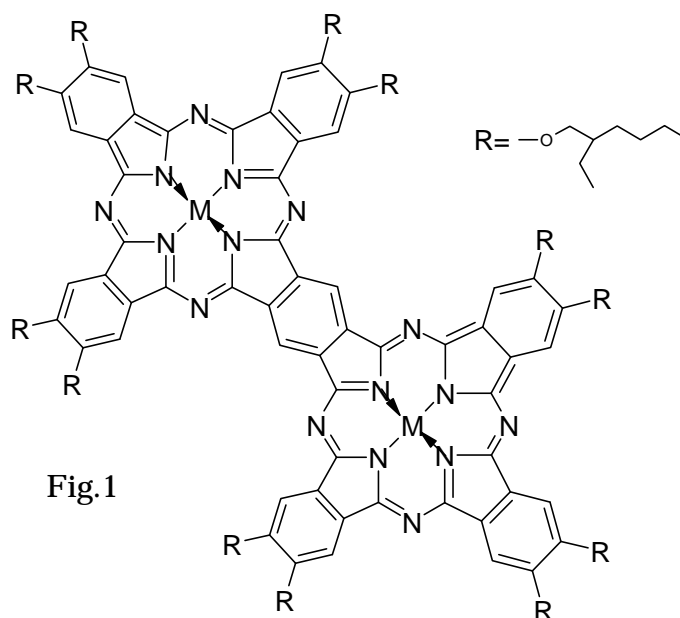


Fig.1